



AL JABR ISLAMIC SCHOOL NEWSLETTE

Interconnecting Islam, Indonesia, and International



How we express ourselves

Personal and cultural expression



Articles in this Issue:

- PYP Classes
- MYP Classes
- CP Classes
- From Coordinators
- Dari Team Admin

How we express ourselves

Pre Kindergarten

In the Unit of Inquiry of "How We Express Ourselves" we explored how we express our feelings and ideas through play to have new understandings.



Kindergarten 1

Through the central idea of "Stories engage their audience and communicate meaning", we explored how effective stories are constructed and how to share feelings and emotion through stories.





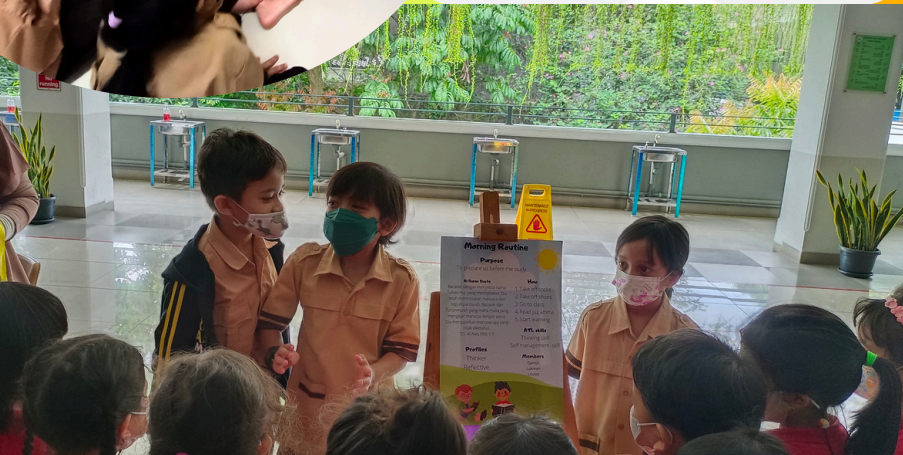
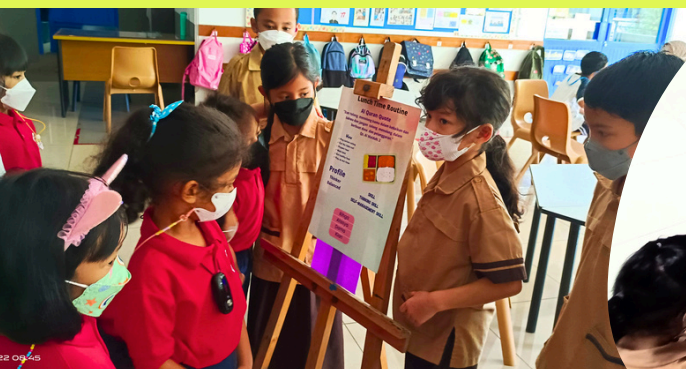
Kindergarten 2

We recognized the features of traditions and celebrations through understanding of different symbolic representations of celebrations and traditions. It strengthen our identity: the belief and values, belongings and cultures.



Grade 1

Through the central idea of "People recognize important events through celebrations and traditions at school," we developed our understanding of how and why the school community had celebrations. We continue to identify the similarities and differences between various celebrations.



CONCERT

"the purpose concert is an event to celebrate our achievement with our parents."

AL QURAN QUOTE

ALLAH SWT MEMERITAKAN KITA UNTUK SALING TOLONG MEMOLONG DALAM KEBAIKAN DAN TAKWA SERTA MELARANG KITA UNTUK TOLONG MEMOLONG DALAM PERBUATAN DOSA DAN SALING BERMUSUBAH.
AL MAIDAH: 2

How

- Choose the role
- Memorize the part
- Fitting the costumes
- Practice at the stage
- Staggering

Profiles:

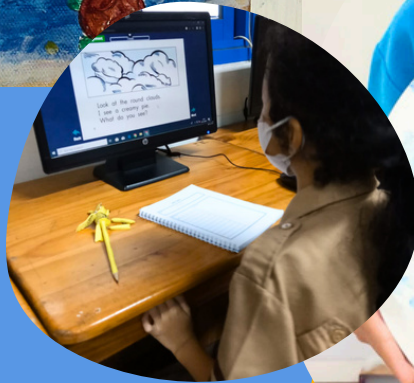
Caring
Communicator
Open minded

Skills:

Thinking skills
Self-management skills



ZARA MILENNA ARSYILA KELANDRA



Grade 2

We learned that human express their understanding of different seasons and natural phenomena through different forms of arts. The connection between the changing of the earth to human feelings and life, allows us to understand how to respond to those changes.



Grade 3

We explored the variety of signs and symbols to identify cultural and historical contexts that impact the development of the communication system through the concept of form and connection. The central idea was "A variety of signs & symbols facilitates local and global perspectives."



At public places:



This means we cannot use or bring a phone. Because if we use or bring we can be distracted. It's at places that you have to be quiet or a place we have to be focus.



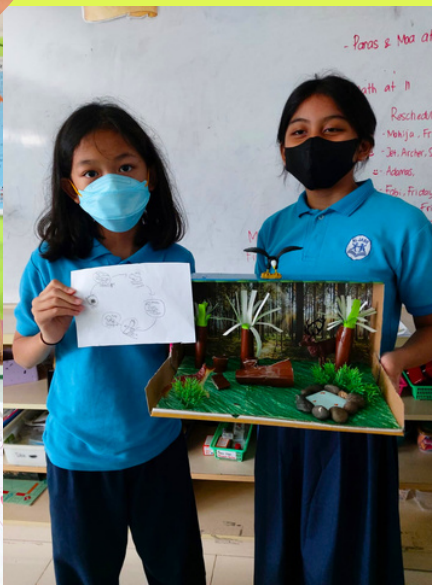
Grade 4

We expressed our understanding of the function the atmosphere for the earth, the importance of gravity, and the process of erosion through visual arts. Demonstration of our responsibility to the environment surely can be created through different artworks. Not only visually pleasing audience, but also relevant and meaningful.



Grade 5

Learning about the importance of borders in natural, social, and political domains enables us to understand the connection between us as a human and the environment. Presenting our understanding into artworks was very interesting experiences!



find out about our video animation project!



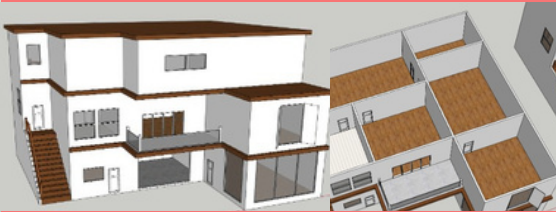
Personal and cultural Expression

This is an inquiry into the ways in which we discover and express ideas, feelings, nature, culture, beliefs and values. Through this Global Context, we extend and enjoy our creativity to present our conceptual understanding in respective MYP subjects as our appreciation of the aesthetic value.

The different forms of expression to the conceptual understanding highlights the important parts of our identity and values system. Through our appreciation of this personal expression, we each can choose the aspects of understanding that further self-acceptance and insight, and better understand how we are alike and different from each other.



The forms of expression may include music, dance, visual art, designs, signs and symbols, performances, ceremonies, architectural forms, handicrafts and narratives, or many other artistic or cultural expressions.





A culture in Physical and Health Education is the expression of a team's values, attitudes, and beliefs about sports and competition. It determines whether the team's focus is on fun, mastery, or winning, or whether it promotes individual accomplishment or team success. (Fajar/12/22)



IBCP

Service Learning

Service learning is the development and application of knowledge and skills toward meeting an identified and authentic community need. It enables students to make a positive contribution to the community and society.

Diabetes check in Bango Community

We initiated practical research in local community to identify potential problems of diabetes especially in the elderly communities. From the initiative we found 30% of the participants potentially have diabetes.



Practical Workshop

Based on our investigation to the community, we continue to organize a workshop, **creating kombucha**, a healthy drink to minimize the risk of having diabetes disease.

It wasn't focused only on daily consumption for health but also looking forward to entrepreneurship by selling the product.

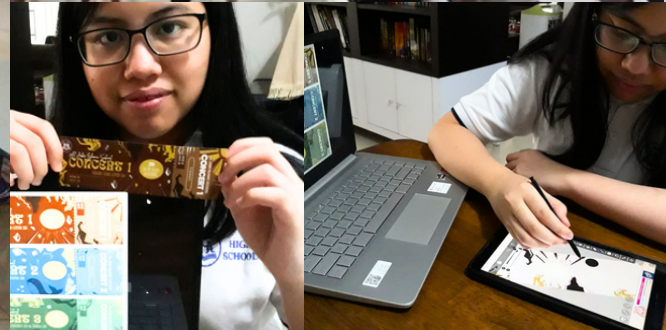


Service Learning

Involvement in Concert 2022

During this year's concert preparation, our students involved themselves in giving their contribution based on their art classes.

They created dance - choreography and taught it to the lower primary students. Some were involved in making costumes, properties and ticket design.



DP Mock Examination 2

The DP Mock Exam was arranged to familiarize the students with the conduct of the examination and exam questions.

We tend our students to be well-prepared to hone their exam-answering skills before they finally take the DP exam in May 2023.



Personal and Professional Skills

CP 1 students developed their interpersonal skills and literacies as part of effective communication. They explore how to construct clear written information and posture's importance.



Career Related Studies

Students developed their conceptual understanding of how human resources management work in business. Starting from recruitment process, placement, organization structure and job description.

Language Development

In Japanese and German Language development students celebrate the individual's unique lifelong relationship with language learning and intercultural understanding.

The role of culture and tradition played interwoven with learning language, about language, and through language that can be overlooked in favor of a more diverse language acquisition experiences.



Reflective Project

Discussion & Feedback with HoS

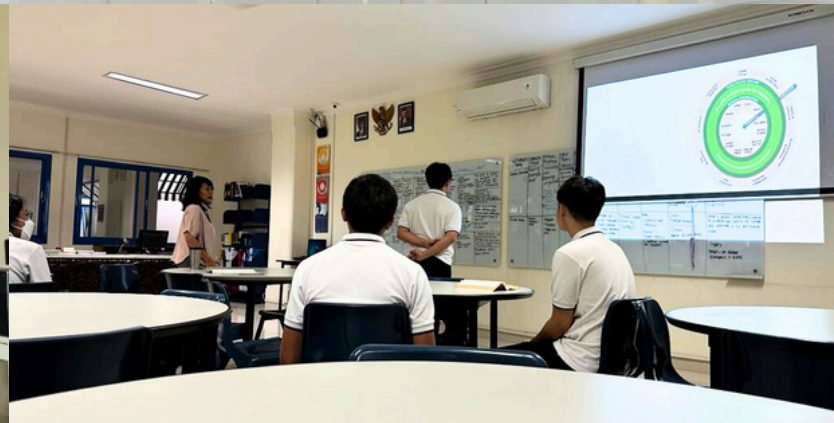
CP 2 Students (G12) are in progress on the Reflective Project as their final project of the Career-related Programme (IBCP).

Students should link their Reflective Project with CRS connection, future career plan, and the doughnut of planetary.

The discussion with HoS enables students to broaden their understanding to better structure their Reflective Project.



Student Name	Career Focus	Career Related Skills	Service	Resource	Reflective Project Focus/Theme
Rizka Rizka	Environmental Engineering	Teamwork, Communication, Problem Solving	IBO Bank, EDM, etc.	TIG (The Green) Ltd Bank Environmental Project of CIBI Group	What are the responsibilities of a professional? (What?) How can we contribute to the environment? What should be the mission of the company?
...



Develop Research through Primary Resource

Broadening our sources, we visited CIFOR (Center for International Forestry) to examine different viewpoints.

We sharpen our inquiry by understanding the global perspective from the environmental dimension regarding the ethical dilemma between business and the environment.





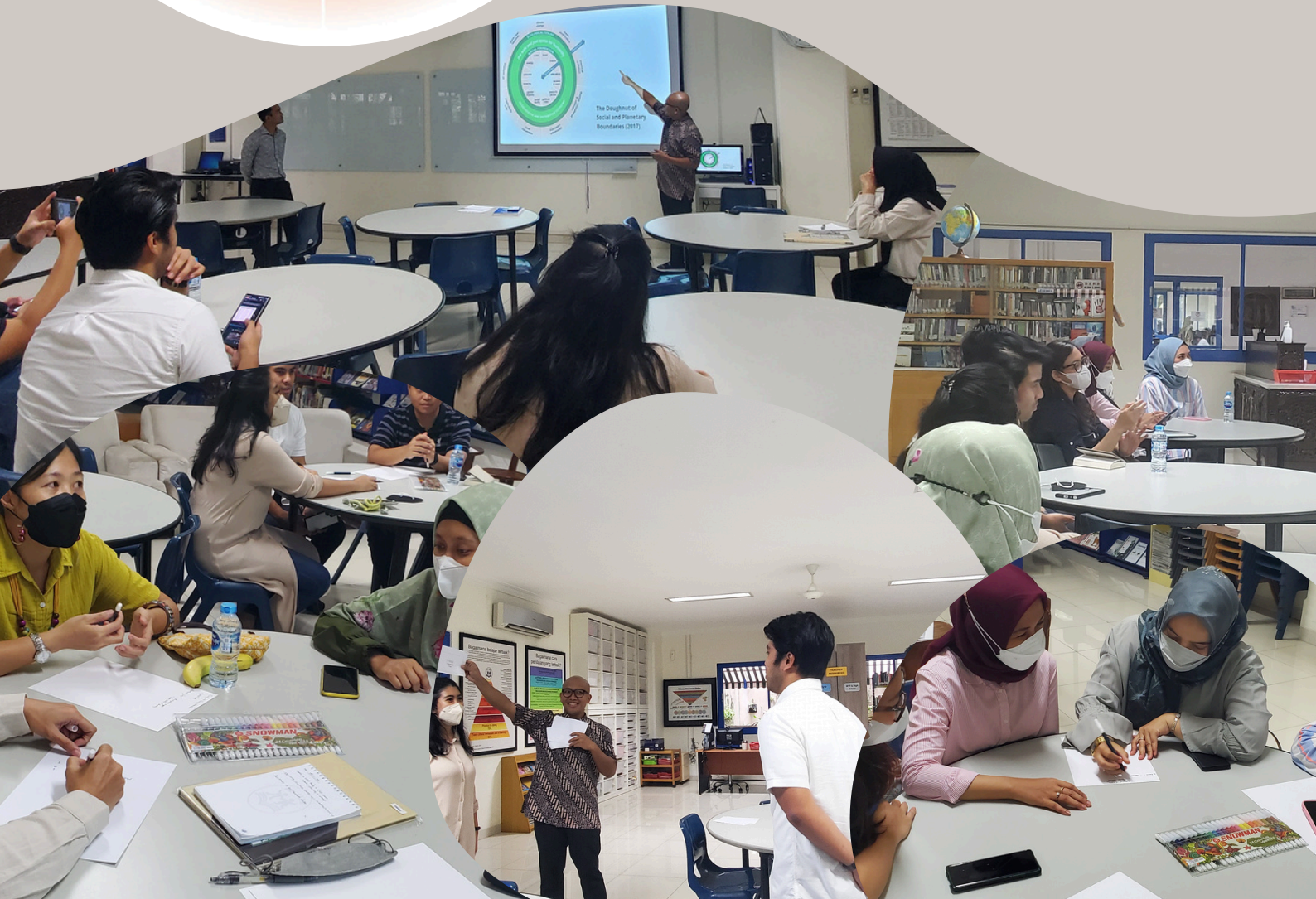
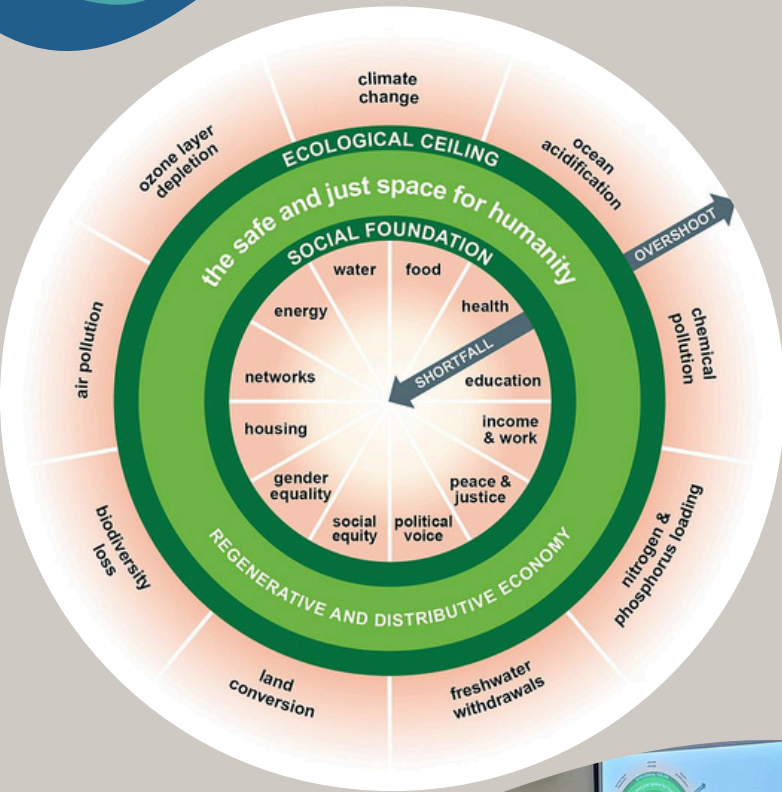
Lifelong learning Session

Parents Workshop

Wellbeing self-care & Environment care

Bringing the knowledge from our latest IB Conference in Singapore and Den Haag, we demonstrate our commitment to learning with parents in discussing our global concern about wellbeing, self-care, and environmental care.

We agreed to develop our students not just on their wellbeing but also as part of the ecosystem of the living world; we tend to awaken their awareness of environmental issues. As expected, they will show their responsibility through meaningful action.



AL JABR CONCERT 2022

Collaborative action of the transdisciplinary and Diversity - Equity - Inclusive (DEI)

Best practices in a transdisciplinary and inclusive environment is that we do not compartmentalize learning/people. We explore concepts, knowledge, skills, profiles and take action within the context of learning.

Our 3 concerts are the example action product of how the transdisciplinary and Diversity - Equity - Inclusive (DEI) works that conveys learning to understand the present world. We make connections. We inclusively collaborate across levels, gender, and ages. We explore different strategies and methods to troubleshoot problems and find solutions. We foster agency and thrive in a culture of equal opportunities to perform according to each respective strengths. Our well being is truly exercised and maintained. *Alhamdulillah.*

We hope by incorporating the values of the prophet's stories, the outcomes and impact to the students and us will be different than if we did not learn this.

The story of Prophet Luth AS teaches us of the consequences for not follow Al Quran rules. Being principled through understanding our identity.

The story of Prophet Yunus AS teaches us to face difficulties by not running away from our duties.

The story of Prophet Zakaria AS and Prophet Yahya AS teaches us to be humble and patient, resilient, and never give up.

find out our
concert
highlight



*"Dan berpegang teguhlah
kalian pada tali (agama)
Allah seraya berjama'ah,
dan janganlah kamu
bercerai berai ... "*

QS Ali Imran [3] : 105





FROM THE COORDINATORS

Assalaamu'alaikum wr.wb.

Alhamdulillah, semester one has come to an end with a satisfactory achievement. The school's emphasis on applying inclusive practices to facilitate the diverse needs, interests, and talents of its students has had a beneficial influence to the Al Jabr learning community. Variety of activities were employed including service projects, alumni sharing, field trips, and guest speakers to facilitate the students' diverse needs.

The inclusive learning practice was implemented not just to students, but also to teachers, including the leadership team. The PYP coordinator (Ryan) and the CP coordinator (Dina) undertook cross teaching to better grasp the continuum approach and to enhance the teachers' approaches to teaching skills.

What's next?

With this accomplishment, we are ready to work on enhancing inclusive learning and teaching practices, as well as incorporating the doughnut of social and planetary boundaries into the learning experience, in order to contribute to the creation of a better world.

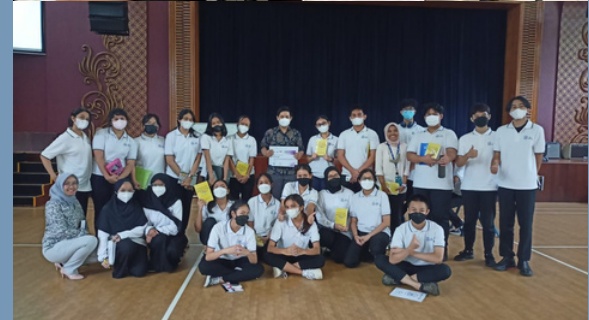
Insyah Allah, on 4 January 2023 to 5 January 2023, the teachers will attend three different IB in-school workshops to improve their teaching and learning practices.

MYP Teachers will deepen their understanding of interdisciplinary in **MYP Interdisciplinary teaching and learning in the MYP Category 2**. Meanwhile the PYP Teachers will attend the **PYP Local and global inquirers Category 2** and the **PYP Developing your PYP framework: Early years Category 3**.

We are looking forward to witness another success to motivate us to achieve a better performance in the next Semester 2. *Bismillah*.

Wassalaamu'alaikum wr.wb.

Ryandika Anindra - PYP Coordinator
Novia Rozet - MYP Coordinator
Dina Anggraini - CP Coordinator



DARI TIM ADMIN

Due to In-school Workshop for the PYP and MYP teachers on January 4-5, 2023, the Semester 2 will be started on **January 9, 2023**.

**Sem 1
Holiday**

●
Dec 12
2022

**School
restart**

●
Jan 9
2023

Up Coming Agenda:

- Feb 7 — Parents Workshop
- Feb 13-16 — IMSF
- Feb 21 — RP Assessment
- Feb 28 — PP Assessment



Misi Sekolah Islam Al Jabr

Misi kami adalah menyediakan pendidikan yang berkualitas tinggi untuk komunitas pelajar di sekolah guna mengembangkan semaksimal mungkin potensi yang dimilikinya melalui pembelajaran yang aktif, sepanjang masa dan kesempatan mendapatkan pengalaman yang nyata demi membentuk individu-individu yang seutuhnya baik mental, fisik, emosi dan akademis dalam rangka ikut mendorong terciptanya dunia yang lebih baik dan menghormati nilai-nilai luhur Islam yang ada di komunitas Indonesia maupun internasional.

